

408 WEST RIVERVIEW AVENUE
ILLEGAL DOWNSPOUT INVESTIGATION

ALL ILLEGAL CONNECTIONS HAVE BEEN CAPPED
OR PUGHED AND ARE IN COMPLIANCE AT
THIS TIME.

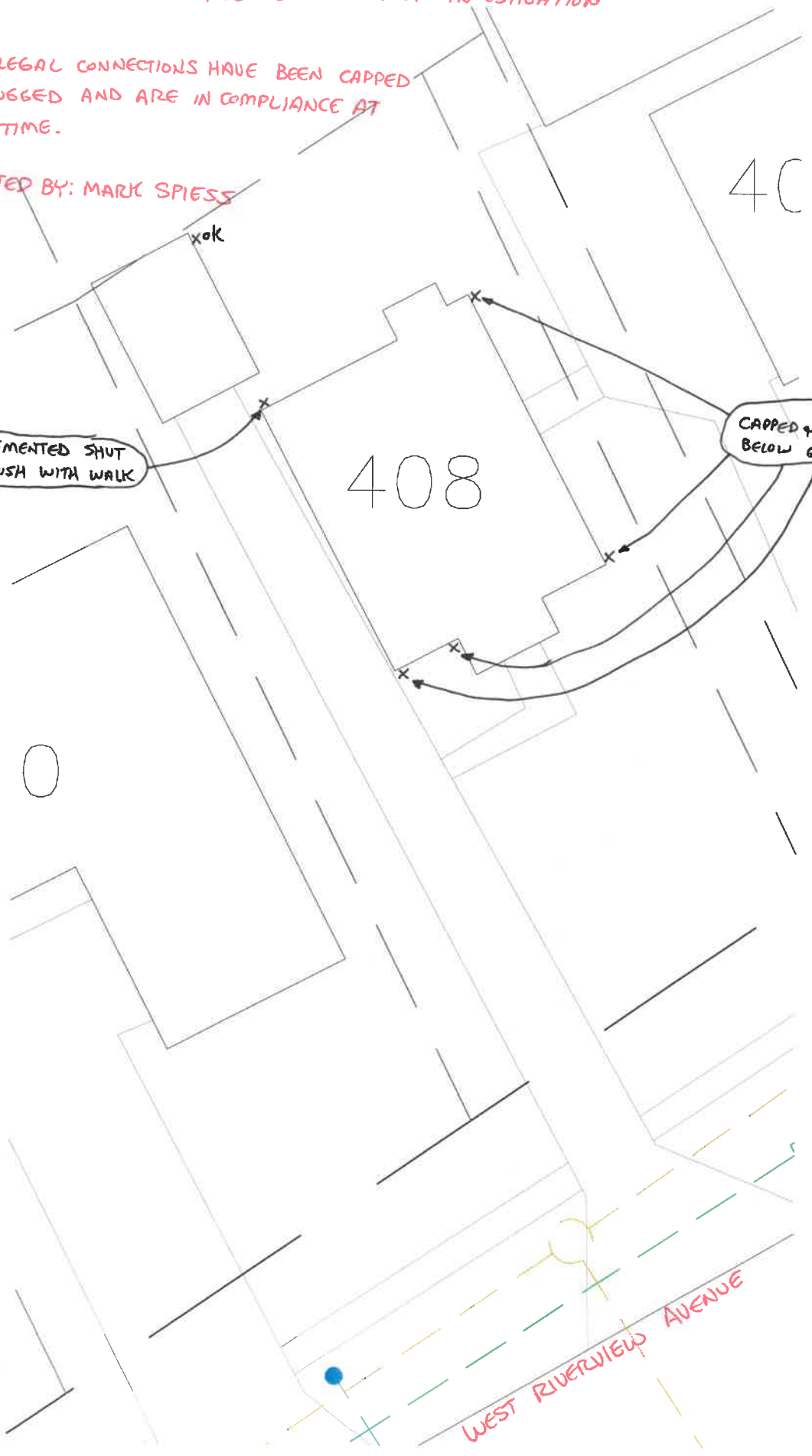
INSPECTED BY: MARK SPIESS

2016
N
1"=20'

CEMENTED SHUT
FLUSH WITH WALK

CAPPED + CEMENTED
BELOW GRADE

408



WEST RIVERVIEW AVENUE